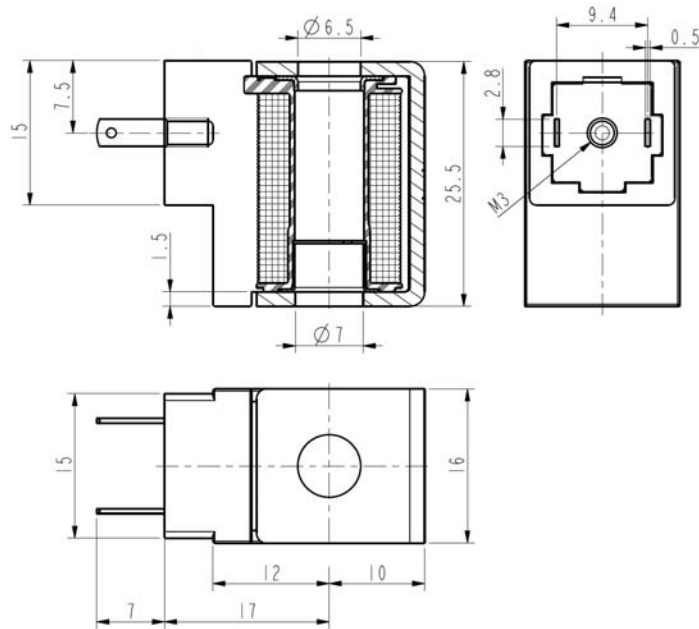




COIL

Spade terminal (DIN 46340)

ZE30



► GENERAL FEATURES

Complying with 2014/35/EU (LVD) directive.
 Zinc plated external steel yoke.
 Product in accordance with the RoHS 2 directive.
 100% inspected.

► ELECTRIC CONNECTION

2 silver-plated spade terminals 2,8 x 0,5 (DIN 46340).
 Micro plug connector.

► ENCAPSULATION MATERIALS

PA (polyamide) fiberglass reinforced; black colour

► TECHNICAL FEATURES

<i>Duty</i>	ZE30A – ZE30C – ZE30L: ED 100%
	ZE30F – ZE30H: ED according to use
<i>Coil insulation class</i>	F (155°C)
<i>Ambient temperature</i>	-10°C +60°C
<i>Protection degree</i>	IP 65 (EN 60529) with micro plug connector
<i>Voltages DC</i>	12-24V (+10% -5%)
	(Other voltages on request)

TYPE	POWER ABSORPTION			HOLES		NOTES	WEIGHT (kg)
	AC (VA)		D+C (W)	$\varnothing A$	$\varnothing B$		
	Inrush	Holding					
ZE30A			4	6,5	7,2	-	0,030
ZE30C			2,5				
ZE30F	-	-	6				
ZE30H			8				
ZE30L			0,5				

► NOTES

THE VALIDITY OF REPORTED DATA IS REFERRED TO THE DATE OF ISSUE. POSSIBLE UPDATES ARE AVAILABLE ON REQUEST

16/06/1702