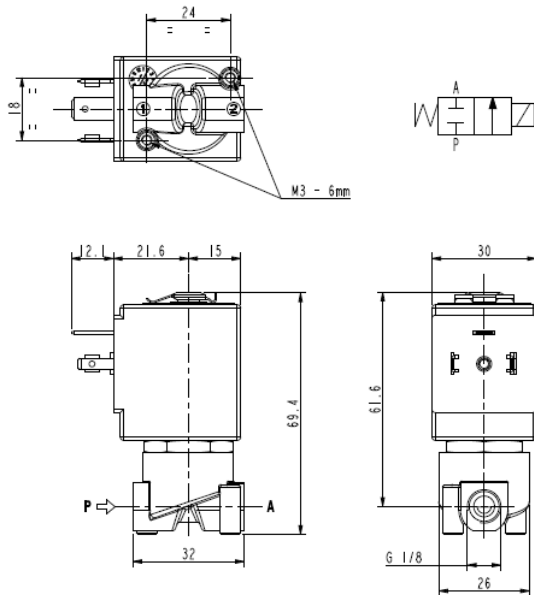




SOLENOID VALVE
2/2- NC (Normally closed)
 Direct acting
G 1/8

L120



► GENERAL FEATURES

Direct acting solenoid valve, small body size.
 Suitable to shut off liquid and gaseous fluids (verify the compatibility of fluid with material in contact).

► TECHNICAL FEATURES

Maximum allowable pressure (PS) 40 bar
 Opening time ~ 20ms
 Closing time ~ 20ms
 Fluid temperature -10°C +170°C (RUBY)
 0°C +130°C (FPM)
 Max viscosity 5°E (~37 cStokes or mm²/s)

► MATERIALS IN CONTACT WITH FLUID

Body Brass
 Sealing RUBY or FPM
 Internal components Stainless steel
 Seat Brass or stainless steel
 Core tube Stainless steel
 Shading coil Copper

► COIL

Approval UL (class F) – for UL cl.H: ZA34
 Continuous duty ED 100%
 Encapsulation material PPS (Polyphenilsulfure) fiberglass reinforced
 Insulation class F (155°C) on request class H (180°C)
 Ambient temperature -10°C +50°C
 Electric connection DIN 46340 - 3 poles plug-connectors (EN175301-803)
 Protection degree IP67 (EN 60529) with plug-connector
 Voltages DC 12-24V (+10% -5%)
 AC 24V/50Hz - 110V/50Hz (120V/60Hz) - 230V/50Hz (+10% -15%)
 (Other voltages and frequencies on request)

Port size ISO 228	Orifice size (mm)	Differential pressure (bar)				Kv (m ³ /h)	Series and type		Power absorption			Sealings	Notes	Weight (kg)	
		Δp min	Δp max				Valve	Coil	AC (VA)		DC (W)				
			Gases		Liquids				Inrush	Holding					
G 1/8	1,6	0	30	20	30	20	L120C01	ZA10A	23	14	9	RUBY	1 – 2 – 3 4 – 5 – 6	0,260	
	2,3		20	10	20	10									0,15
	1,6		30	30	30	30	L120V02								
	2,3		20	16	20	16									0,15

► NOTES

- Sealings: RUBY=Synthetic corundum. FPM=Fluoro-carbon elastomer (complying with FDA standards)
- IMQ CSV approval, see ZA10 datasheet for further details
- UL approved coil (E153691)
- 1 - The use of rigid sealings (RUBY) with gaseous fluids implies a slight leakage, generally limited with in 2 scc/min at 1 bar pressure.
- 2 - Solenoid valve with stainless steel seat, suitable for overheated water and steam.
- 3 - Only for use with steam, consider following values: max pressure 8 bar (max temperature of fluid 170°).
- 4 - Gasket between core tube and body in FPM.
- 5 - On request special coil ZA10X, class "F", with UL homologated windings – see overleaf.
- 6 - Model available on request only: ask for minimum quantity.

L120

► COIL FOR SPECIAL VOLTAGES ZA10X

Approval	UL (class F) see voltages	Electric connection	DIN 46340- 3 poles plug-connectors (EN175301-803)
Continuous duty	ED 100%	Protection degree	IP 67 (EN 60529) with plug-connector
Encapsulation material	PPS (Polyphenilsulfure) fiberglass reinforced	Voltages AC	24V/50-60Hz (UL) ▪ 100V/50-60Hz ▪ 115-120V/60Hz ▪ 200V/50-60Hz ▪ 220-230V/50Hz - 208-240V/60Hz (UL) ▪ 220-240V/50Hz (UL) ▪ (+10% -15%)
Insulation class	F (155°C)		
Ambient temperature	-10°C +50°C		

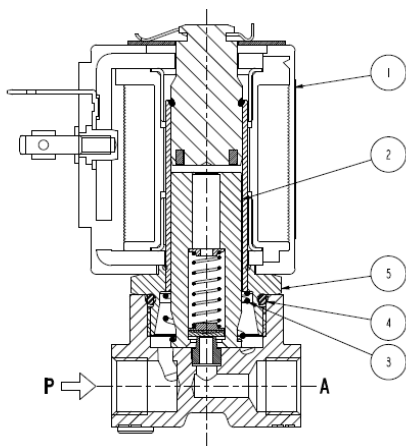
Port size ISO 228	Orifice size (mm)	Differential pressure (bar)				Kv (m ³ /h)	Series and type		Power absorption			Sealings	Notes	Weight (kg)	
		Δp min	Δp max				Valve	Coil	AC (VA)		DC (W)				
			Gases		Liquids				Inrush	Holding					
			AC	DC	AC										DC
G 1/8	1,6	0	30	-	30	0,15	L120C01	ZA10X	23	14	-	RUBY	1 - 2 - 3 - 4 5 - 6	0,270	
	2,3		20	20	0,09		L120V02								
	1,6		30	30		0,15									
	2,3		16	16											

► NOTES

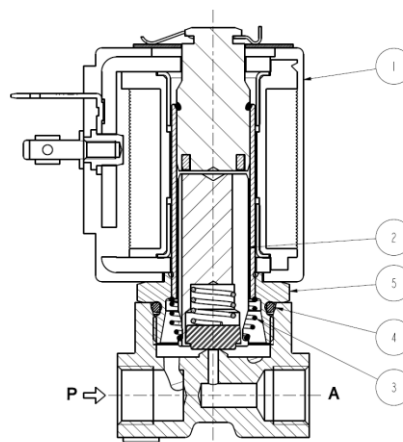
- Sealings: RUBY=Synthetic corundum. FPM=Fluoro-carbon elastomer (complying with FDA standards)
- 1 - The use of rigid sealings (RUBY) with gaseous fluids implies a slight leakage, generally limited with in 2 scc/min at 1 bar pressure.
- 2 - Solenoid valve with stainless steel seat, suitable for overheated water and steam.
- 3 - Only for use with steam, consider following values: max pressure 8 bar (max temperature of fluid 170°).
- 4 - Gasket between core tube and body in FPM
- 5 - On request L120C08 model, M4 fixing holes (no standard)
- 6 - Model available on request only: ask for minimum quantity.

► SPARE PARTS

L120 C01



L120 V02



Kit description

Core kit

L120C01
L120V02

Kit P.N.

G3008801
G3022803

Consisting of:

Core (with core return spring) pos. 2
OR guide assembly pos.4

Core return spring kit

L120C01
L120V02

G3018901
G3022401

N.10 core return spring pos.3

OR guide assembly kit

L120C01 - V02

GU242400017

N.10 OR guide assembly pos.4

Guide assembly kit

G31486

Guide assembly pos.5
Coil clip

Coil

ZA10A
ZA10X

Coil pos.1

► INSTALLATION

- Solenoid valve can be mounted in any position; vertical with coil upwards preferred.